



HBE 35A-400A

Semiconductor Fuses

半导体保护熔断器



Standard/ 标准: IEC 60269-4, GB/T 13539.4, UL 248-13

INTERRUPTING CAPACITY / 分断能力:

100,000 amperes at 1000V AC
50,000 amperes at 750V DC

TECHNICAL PARAMETERS/ 技术参数:

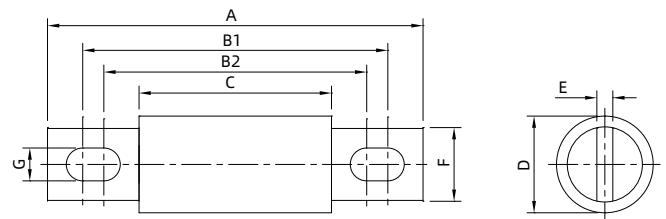
PART NO. 目录编号	CURRENT RATING 额定电流	SAFETY APPROVALS 安全认证
		cURus
HBE35	35A	○
HBE40	40A	○
HBE50	50A	○
HBE60	60A	○
HBE70	70A	●
HBE80	80A	●
HBE90	90A	●
HBE100	100A	●
HBE125	125A	●
HBE150	150A	●
HBE175	175A	●
HBE200	200A	●
HBE225	225A	●
HBE250	250A	●
HBE300	300A	●
HBE350	350A	●
HBE400	400A	●

● DENOTES FOR APPROVAL
○ DENOTES FOR PENDING

● 表示已取得安全认证
○ 表示正在申请安全认证

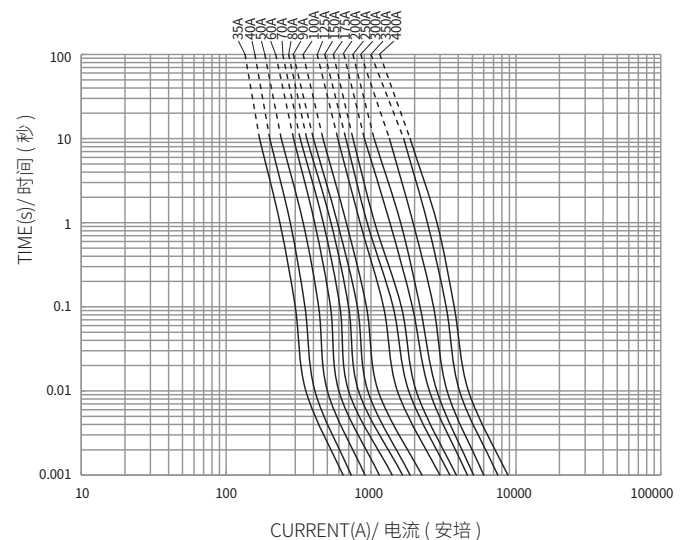
Dimensions/ 尺寸:

Unit 单位: mm



HBE 平均 I-T 曲线图 (仅供参考)

AVERAGE I-T CHARACTERISTICS CURVE
(FOR REFERENCE ONLY)



额定电流 Current Rating A	尺寸 Dimensions(mm)							
	A±2	B1±2	B2±2	C±1.5	D±1	E±0.5	F±1	G±1
35A-60A	125	110	104.6	87	25	3.2	18	8.2
70A-100A	126	108.6	105	87	31	4.8	24	8.6
110A-200A	143	121	107.4	87	38	6.4	25.4	10.4
225A-400A	143	123	107.4	87	50.8	6.4	38	10.4